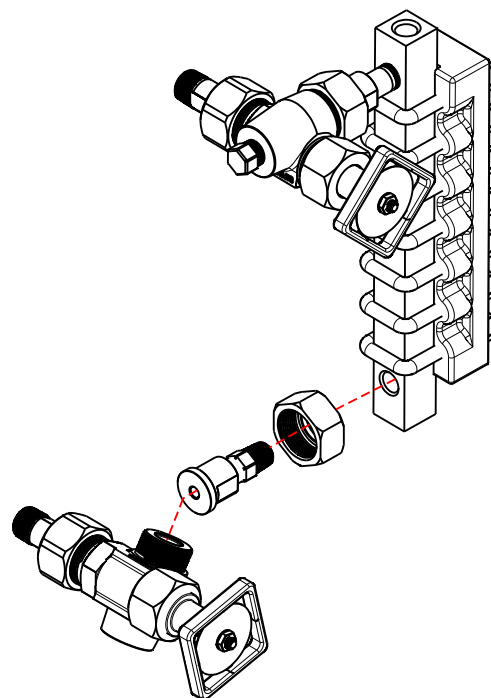
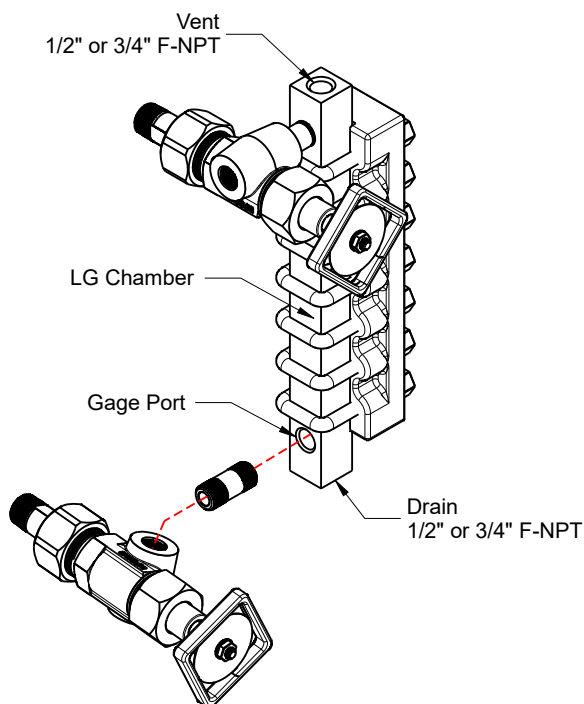


## Side Connected LG

Single Union Valve

Double Union Valve

## Back Connected LG



Continued on page 2

Gages shown are Reflex type (R100)

Reference Drawing: GA.ASSY1

Level Gage 9-Letter model number system



**Inferno Manufacturing Corporation**

115 Ricou St. Shreveport, LA USA 71107

T (318) 221-8454 F (318) 222-4106

inferno@infernomfg.com

Gage & Vessel Connections  
Close Hook-UP "CH" Style Gages

Drawing No: A212153

Apprvd Date: 3/11/2021

Drawing Date: 3/11/2021

Revision: 0

Drawn by: TB

Rev Date: N/A

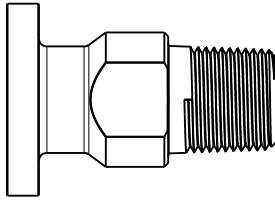
Approved by: AO

© 2021 Inferno Mfg Corp

## Vessel Connector (NPT)

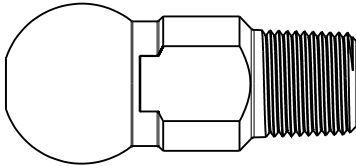
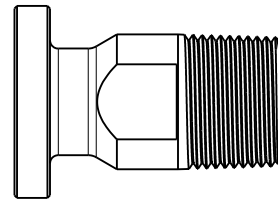
"Floating Shank"  
aka Tail Piece or Tail Pipe

1/2" NPT

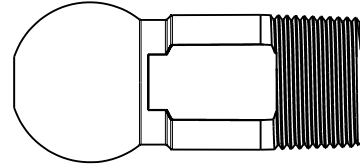


Flat Union

3/4" NPT



Spherical Union

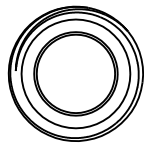
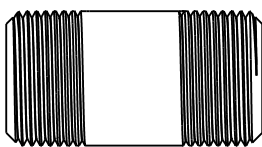


## Gage Connectors / Piping

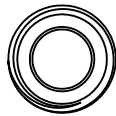
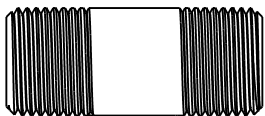
### FT15 Single Union

Threaded Both Ends (TBE)  
Sch 160 std.

3/4" NPS



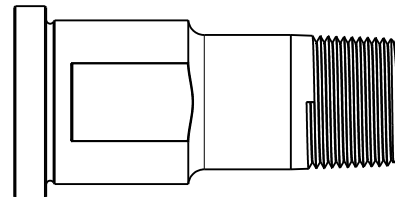
1/2" NPS



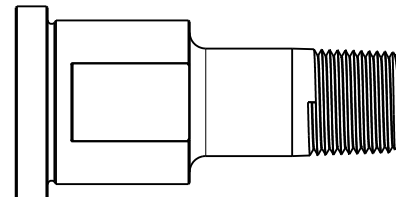
Nipples in horizontal orientation for Close Hook-Up  
Gages are always supplied as Sch 160

### FT25 Double Union

Gage Connector - Male



3/4" NPT



1/2" NPT

Reference Drawing: GA.ASSY1

Level Gage 9-Letter model number system



**Inferno Manufacturing Corporation**

115 Ricou St. Shreveport, LA USA 71107

T (318) 221-8454 F (318) 222-4106

inferno@infernomfg.com

Gage & Vessel Connections  
Close Hook-Up "CH" Style Gages

Drawing No: A212153

Apprvd Date: 3/11/2021

Drawing Date: 3/11/2021

Revision: 0

Drawn by: TB

Rev Date: N/A

Approved by: AO

© 2021 Inferno Mfg Corp