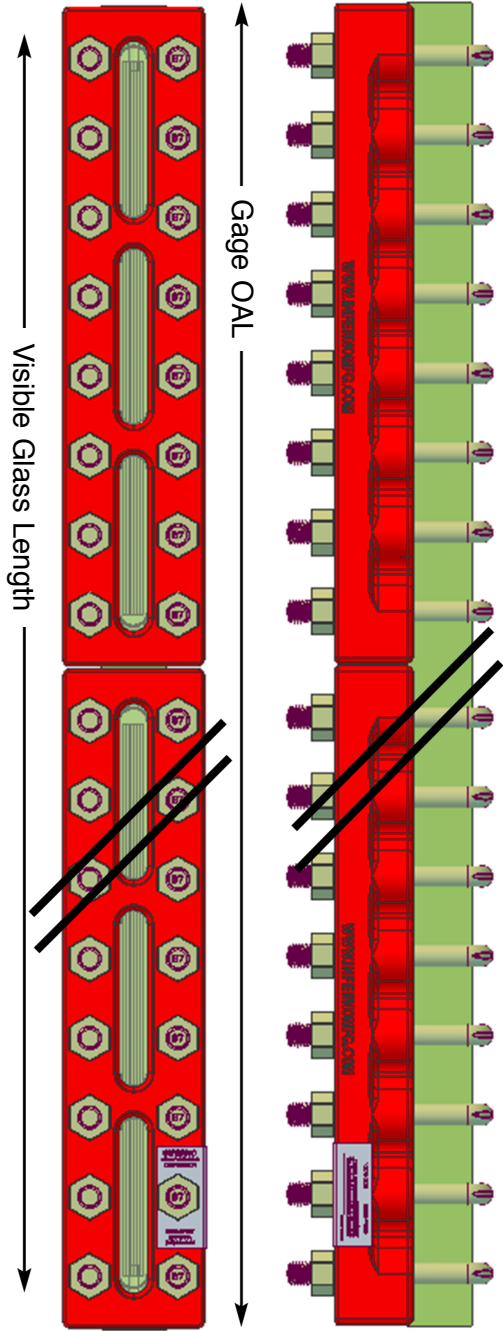


# R100 Series Level Gage- Reflex Style

for Liquid-Vapor level reading

Reflex reads **SILVERY-WHITE** in vapor;  
reads **BLACK** in Liquid, even clear service such as  
water, hydrocarbon condensate, or ammonia



Model No.	Visible Length (In)	Overall Length (In)	Weight (Lbs)
OAL dimension & illustrations show "End Connected" type			
R100-13	5.75	7.25	12
R100-14	6.75	8.25	13
R100-15	7.875	9.375	14
R100-16	9.125	10.625	16
R100-17	10.25	11.75	18
R100-18	11.875	13.375	20
R100-19	12.625	14.125	21
R100-24	15	16.5	24
R100-25	17.25	18.75	27
R100-26	19.75	21.25	31
R100-27	22	23.5	34
R100-28	25.25	26.75	39
R100-29	26.75	28.25	41
R100-36	30.375	31.875	46
R100-37	33.75	35.25	51
R100-38	38.625	40.125	58
R100-39	40.875	42.375	61
R100-47	45.5	47	68
R100-48	52	53.5	77
R100-49	55	56.5	81
R100-57	57.25	58.75	85
R100-58	65.375	66.875	96
R100-59	69.125	70.625	102
R100-68	78.75	80.25	116
R100-69	83.25	84.75	122
R100-78	92.125	93.625	135
R100-79	97.375	98.875	142
R100-88	105.5	107	154
R100-89	111.5	113	163
R100-98	118.875	120.375	173
R100-99	125.625	127.125	183
R100-108	132.25	133.75	193
R100-109	139.75	141.25	204

Pressure Ratings, PSI — tempered borosilicate glass factory hydrotested to 1.3 x					
Exception: Steam Service limited to 250 WSP					
100° F	200° F	300° F	400° F	500° F	572° F
2810	2720	2620	2520	2330	2090
2710	2640	2540	2440	2270	2010
2630	2550	2450	2360	2190	1950
2540	2450	2370	2280	2100	1870
2440	2370	2280	2200	2020	1800
2340	2280	2200	2110	1950	1730
2250	2190	2100	2030	1870	1670
2710	2640	2540	2440	2270	2010
2630	2550	2450	2360	2190	1950
2540	2450	2370	2280	2100	1870
2440	2370	2280	2200	2020	1800
2340	2280	2200	2110	1950	1730
2250	2190	2100	2030	1870	1670
2540	2450	2370	2280	2100	1870
2440	2370	2280	2200	2020	1800
2340	2280	2200	2110	1950	1730
2250	2190	2100	2030	1870	1670
2440	2370	2280	2200	2020	1800
2340	2280	2200	2110	1950	1730
2250	2190	2100	2030	1870	1670
2440	2370	2280	2200	2020	1800
2340	2280	2200	2110	1950	1730
2250	2190	2100	2030	1870	1670
2440	2370	2280	2200	2020	1800
2340	2280	2200	2110	1950	1730
2250	2190	2100	2030	1870	1670
2340	2280	2200	2110	1950	1730
2250	2190	2100	2030	1870	1670
2340	2280	2200	2110	1950	1730
2250	2190	2100	2030	1870	1670

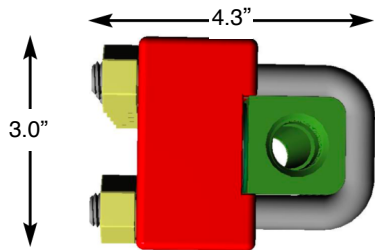
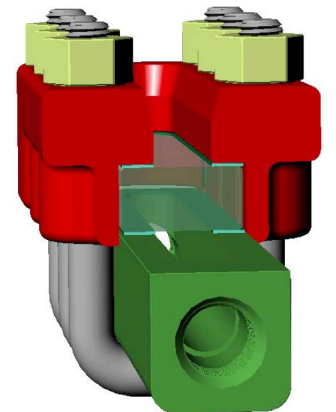
Maximum continuous operating temperature decreased from 600°F to 572°F based on glass manufacturer's published rating for tempered borosilicate.

Exception: Hot oil / thermal transfer fluid applications with borosilicate glass permitted up to 600°F, limited to 145 PSI max.

-For higher temperature applications ask for T100 or T200 with tempered aluminosilicate glass... not available in reflex-

### MATERIALS & DESIGN

- Wetted per NACE — MOC options: M191980
  - Group 1: All steel, MDMT -20°F
  - Group 2: L.T. steel, MDMT -50°F
  - Group 3: All T316, MDMT -320°F
  - Group 4: Steel / B7M bolting, MDMT -20°F
  - Group 5: T316 wetted, MDMT -20°F
- Tempered borosilicate glass
- Flexible graphite seal / comp. fiber cushion
- Powder paint covers & zinc plated bolts
- Large thru-bore (0.59" Ø) between sections allows brush access for cleaning
- Cross-ties enhance strength, with undercut permitting "behind-the-bar" vision for complete view- design validated by FEA



### End Connections

- 1/2" F-NPT standard
- 3/4" F-NPT optional

### Drawing R100

Revision: B Rev. Date: 8-27-19

Created: 7-30-07