

Gage Size	Visible Glass	Gage Port C-C (minimum)	Vessel C-C (minimum)
-11	3.75	5.25	3.75
-12	4.75	6.25	4.75
-13	5.75	7.25	5.75
-14	6.75	8.25	6.75
-15	7.875	9.375	7.875
-16	9.125	10.625	9.125
-17	10.25	11.75	10.25
-18	11.875	13.375	11.875
-19	12.625	14.125	12.625
-24	15	16.5	15
-25	17.25	18.75	17.25
-26	19.75	21.25	19.75
-27	22	23.5	22
-28	25.25	26.75	25.25
-29	26.75	28.25	26.75
-36	30.375	31.875	30.375
-37	33.75	35.25	33.75
-38	38.625	40.125	38.625
-39	40.875	42.375	40.875
-47	45.5	47	45.5
-48	52	53.5	52
-49	55	56.5	55
-57	57.25	58.75	57.25
-58	65.375	66.875	65.375
-59	69.125	70.625	69.125
-68	78.75	80.25	78.75
-69	83.25	84.75	83.25
-78	92.125	93.625	92.125
-79	97.375	98.875	97.375
-88	105.5	107	105.5
-89	111.5	113	111.5
-98	118.875	120.375	118.875
-99	125.625	127.125	125.625
-108	132.25	133.75	132.25
-109	139.75	141.25	139.75

Advantages...

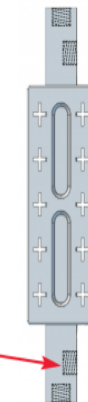
Advantages of “Close Hook-Up” style vs off-the-shelf “End Connected” gages are:

- More visible glass length for established vessel centers
- Permits use of gage valves with spherical union vessel connections, for much greater

flexibility during fit-up.... the spherical joint overcomes misalignment of fittings, reduces mechanical stress in piping, insures leak tight joint when a conventional flat union connection fails to close the gap... useful on horizontal vessels without bridles, where nozzles are planted “on the hillside” and difficult to plumb.

to Size and Specify...

- 1 Choose the row with the largest “Vessel C-C” that is equal to or less than the actual vessel C-C. Read left for “Gage Size”. Designate “CH” as in R100-39 CH, T100-14 CH etc- or if preferred use nine-letter suffix system
- 2 Order by gage size and actual vessel center to center. No need to specify Gage Port C-C. Actual vessel centers are required by Inferno before manufacture.
- 3 **Extended** Gage Port centers are available to match any longer vessel center to center.



Notes...

- 1 Dimensions shown are for gages with 1/2” F-NPT ports. Add 3/8” for gages with 3/4” F-NPT ports.
- 2 Inferno gage valves: 15A, FT15, FT25, have 3/4” internal offset same as Brand “P” but different from 7/8” in other brands.

Offsets Inside vs Outside vs Parallel... Inferno gage valves Offsets Inside vs Outside vs Parallel... Inferno gage valves configured w offsets “Outside” add 3” to the “Vessel C-C” . If valves can be assembled with offsets “Parallel” add 1-1/2” to dimension shown. For illustrations of four ways see Inferno Drawing A111517.